

Technical Instructions TI-1083B

INSTALLING SET-O-MATIC COIN METER ON GENERATION 6 EMERALD SERIES WASHERS

CAUTION: THESE INSTRUCTIONS ARE INTENDED TO ASSIST QUALIFIED, EXPERIENCED SERVICE PERSONNEL ONLY! IMPROPER SERVICING OF MACHINERY MAY RESULT IN HAZARDOUS CONDITIONS, PERSONAL INJURY, OR DAMAGE TO PROPERTY. PERSONS NOT TRAINED, OR PERSONS UNFAMILIAR WITH WASCOMAT LAUNDRY MACHINES, SHOULD REFER SERVICING TO QUALIFIED PERSONNEL.

WASHERS AFFECTED: E620-E675, EX618-EX655

PARTS REQUIRED: Drop coin meter part number 080208 ("-87" sensor) or 080044 ("-78" sensor)

MECHANICAL INSTALLATION:

1. Before beginning installation, examine the Set-O-Matic coin acceptor to be installed. The optical sensor part number may end with the numbers "-78" or "-87". If so, you will need to install an extra jumper wire as instructed in step 6.
2. **DISCONNECT ELECTRICAL POWER FROM THE WASHER.**
3. Remove the washer's top panel. It is NOT necessary to remove the coin meter housing from the washer to perform this procedure.
4. If present, remove and discard the coin funnel and housing-faceplate from the coin meter housing.

Insert the coin acceptor into the top opening on the front of the coin meter housing. Secure it in place from the inside with the long hex-shafted bolt and washer(s) provided.



Remove funnel
and plate



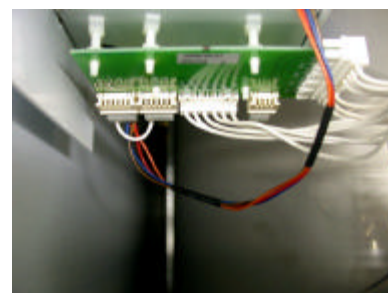
Insert the coin meter...



and secure it in place.

ELECTRICAL CONNECTIONS:

5. The coin meter connection circuit board (A83) is on the back of the coin meter housing inside the washer. The circuit board is clearly marked with the locations of edge connectors "X221" (*primary* coin meter) and "X321" (*secondary* coin meter) - note that the X321 marking may be obscured from view by a circuit-



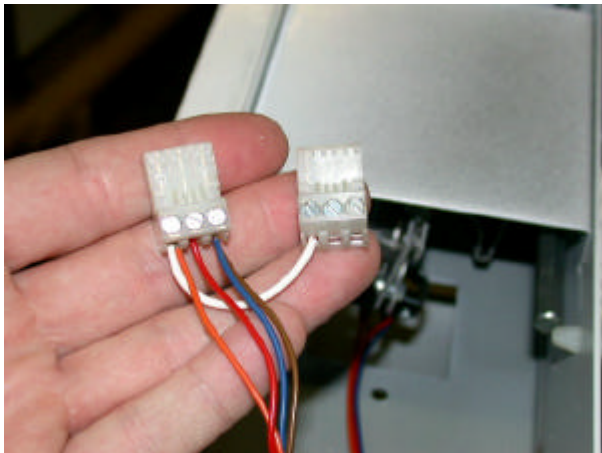
board mounting post). Also note the “LED”, “COIN 1” and “GND” markings on the circuit board. Each marking corresponds to a screw terminal on the circuit board edge connector. Pull the two connectors at these locations STRAIGHT DOWNWARD to remove them from the circuit board.

6. Using one of the two connectors removed in step 5, connect the coin meter optical sensor wires as follows:

- **The ORANGE wire to “LED” (left-hand) screw terminal.**

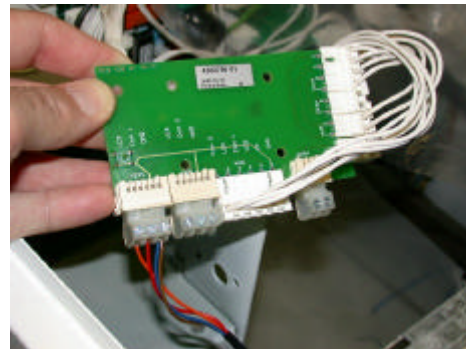
IMPORTANT NOTE: If the optical sensor on the coin meter you are installing ends with “-78” or “-87”, also connect this screw terminal to the same screw terminal on the X321 (“Coin 2”) connector, using a short jumper wire. For sensors not ending with these numbers, this additional jumper is not required.

- **The RED wire to the “Coin 1” (center) screw terminal.**
- **The BROWN and BLUE wires to the “GND” (right-hand) terminal.**



Orange / Red / Brown & Blue

(jumper is for “-78” and “-87” optical sensors only)



View of proper sensor connection without jumper

7. Re-connect the edge-connectors onto the A83 circuit board, with the three optical sensor wires on X221 (primary coin meter) and the single jumper wire (where required) aligned with the LED terminal of the “Coin 2” (X321) terminals.

Note: The second optical switch on dual coin acceptors is connected to the X321 connector in the same way as described above. (The LED signal jumper wire referred to in step 6 is not to be installed when using dual coin acceptors).

Refer to your operating manual for instructions on programming the washer for coin operation, and testing the coin acceptor input(s) on the electronic timer.

8. Replace the top panel of the washer, restore power, program the required coin count for each wash program (see operating manual), and test the machine.

Contact Wascomat’s Technical Support Department at 516-371-0700 if you have questions regarding this or any service procedure on Wascomat machines.

ti1083b) 6/2002